



**FRUIT BOWL MURAL**

23 1/8 X 28 3/8

This mural is sometimes installed in a back splash  
above the stove...



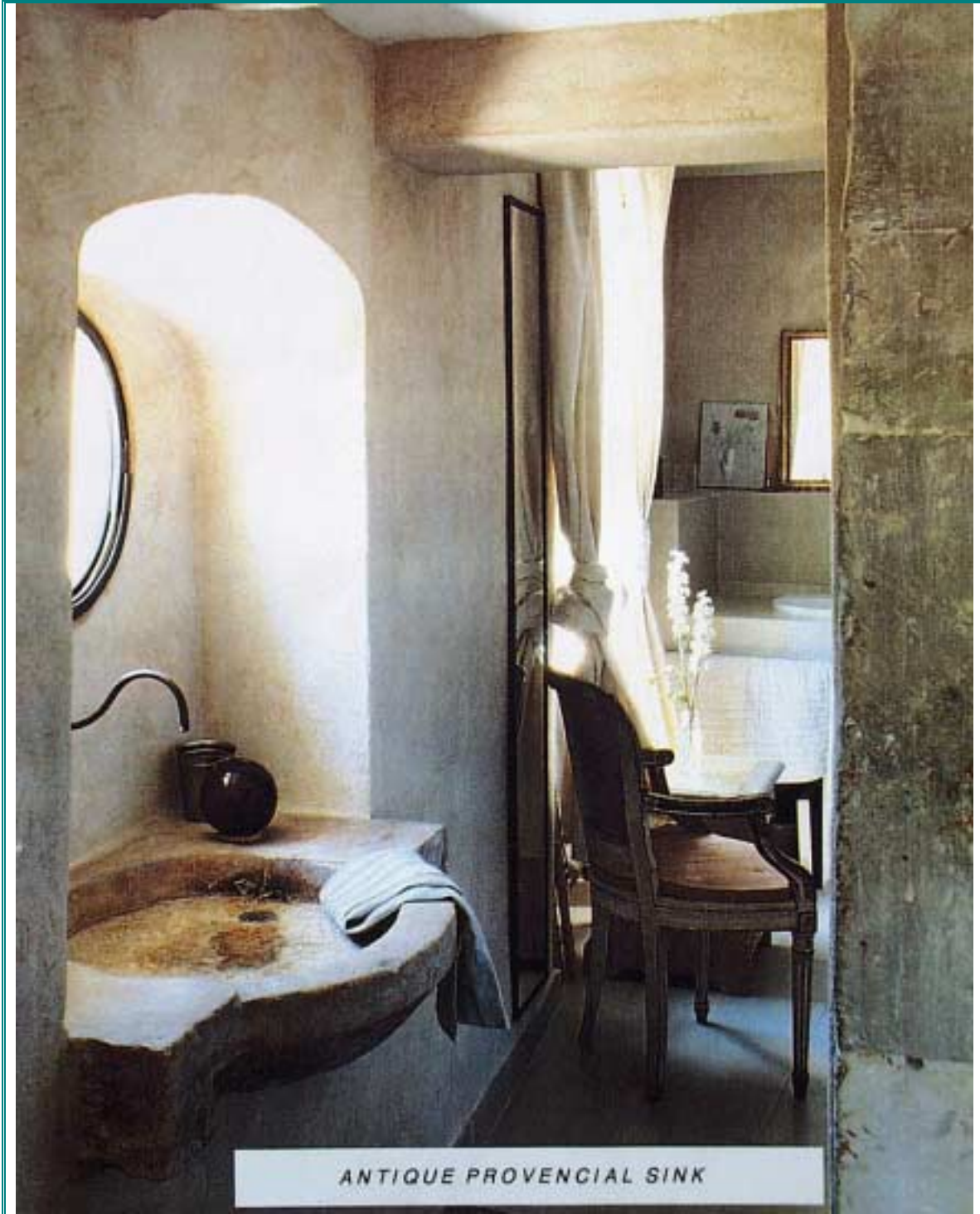
### **CURVED STAIR WAY**

Tread are 12" deep by 48" long +, Usually 1" thick.  
One of our customer said  
"Everybody should have their stairs made out of stone"



### **SET OF RED STAIRS**

Obviously challenging colors can be achieved.  
A stone stair way can add value to your home.



*ANTIQUE PROVENCIAL SINK*

**ANTIQUE SINK**

Width 39" x D 24" x 10" thick.

The original "Lave Main" is dated from the 12<sup>th</sup> century, in Provence.



**HOOD, TILES, CORBELS AND COUNTER TOPS**  
1<sup>st</sup> Prize winner in Design Excellence Awards, November 1998,  
Sacramento magazine.  
Could you believe its concrete?



**DETAIL CLOS DU LAC**

Counter tops, acid stained tiles and bullnozes surround a farm sink. Tiles are available in several sizes, 4x4x3/8" being the smallest size. 18x24 being the largest.



**DETAIL HALEY**

A close-up of a joint detail between two slabs.

The maximum size for counter tops slabs is 60" x 30".

This countertop edge is a typical eased edge. Ogee and Bullnoze are available.



### **DETAIL MAGY**

A grapevine border is used for a beautiful 5" backsplash. Small recessed lights above enhance the bas-relief at night.



### **HOOD AND SPICE RACK**

The mantel 001 has been stretch to 12' 6" to create this dramatic hood.

Deep counter tops (32") surround a professional cook top.

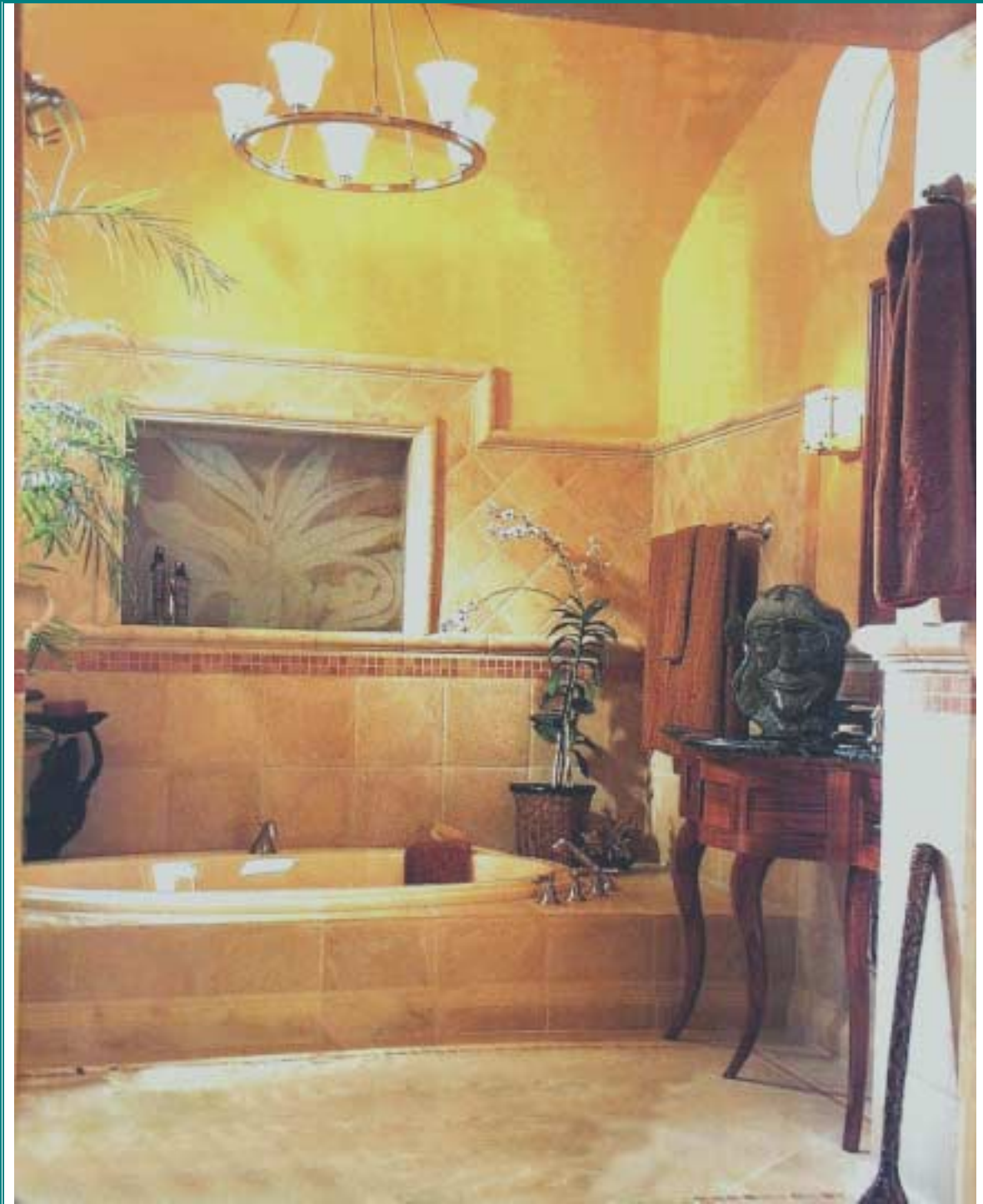
The spice rack, behind the leg is made with small-suspended concrete slabs.

First Prize winner in 1997.



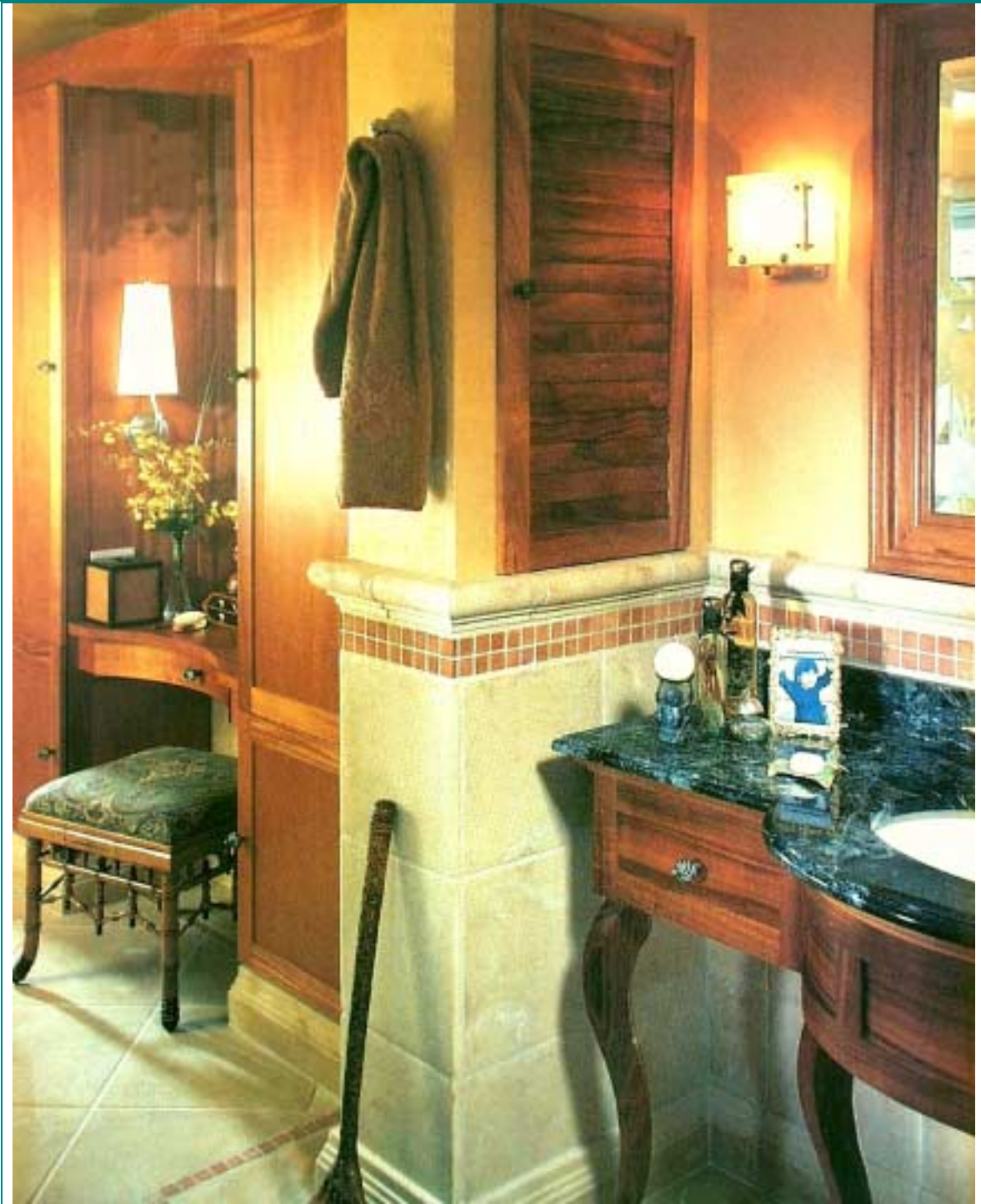
### **RATTAN EDGE COUNTERTOP**

In this kitchen, all countertops are concrete slabs except for the island. The rattan border in conjunction with an ogee edge in the slab have created a very thick counter, very bulky (4 ½ ). Special installation required.



Concrete Tiles and Trims  
This beautiful bathroom was published in Honolulu Magazine

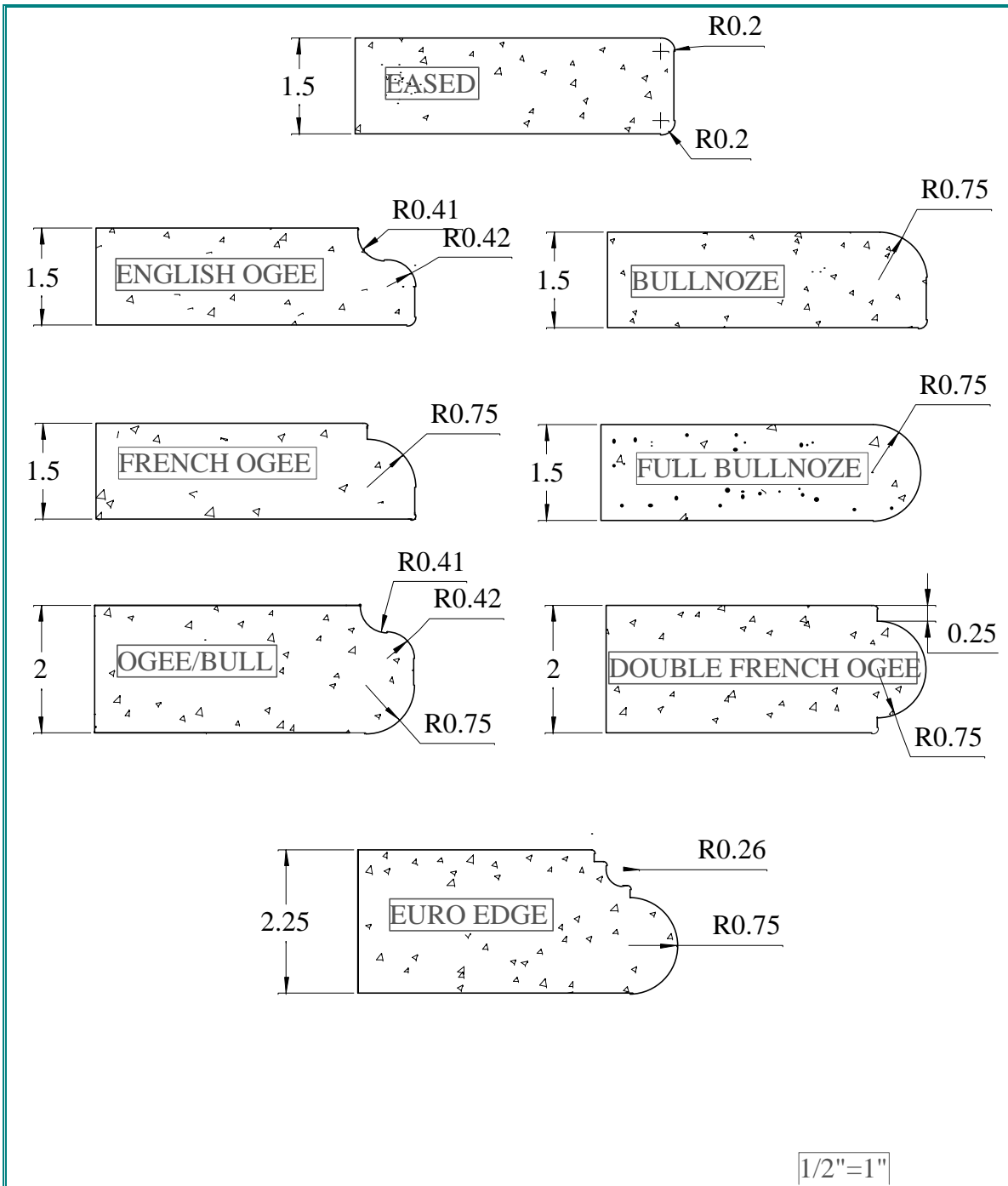
July 1999



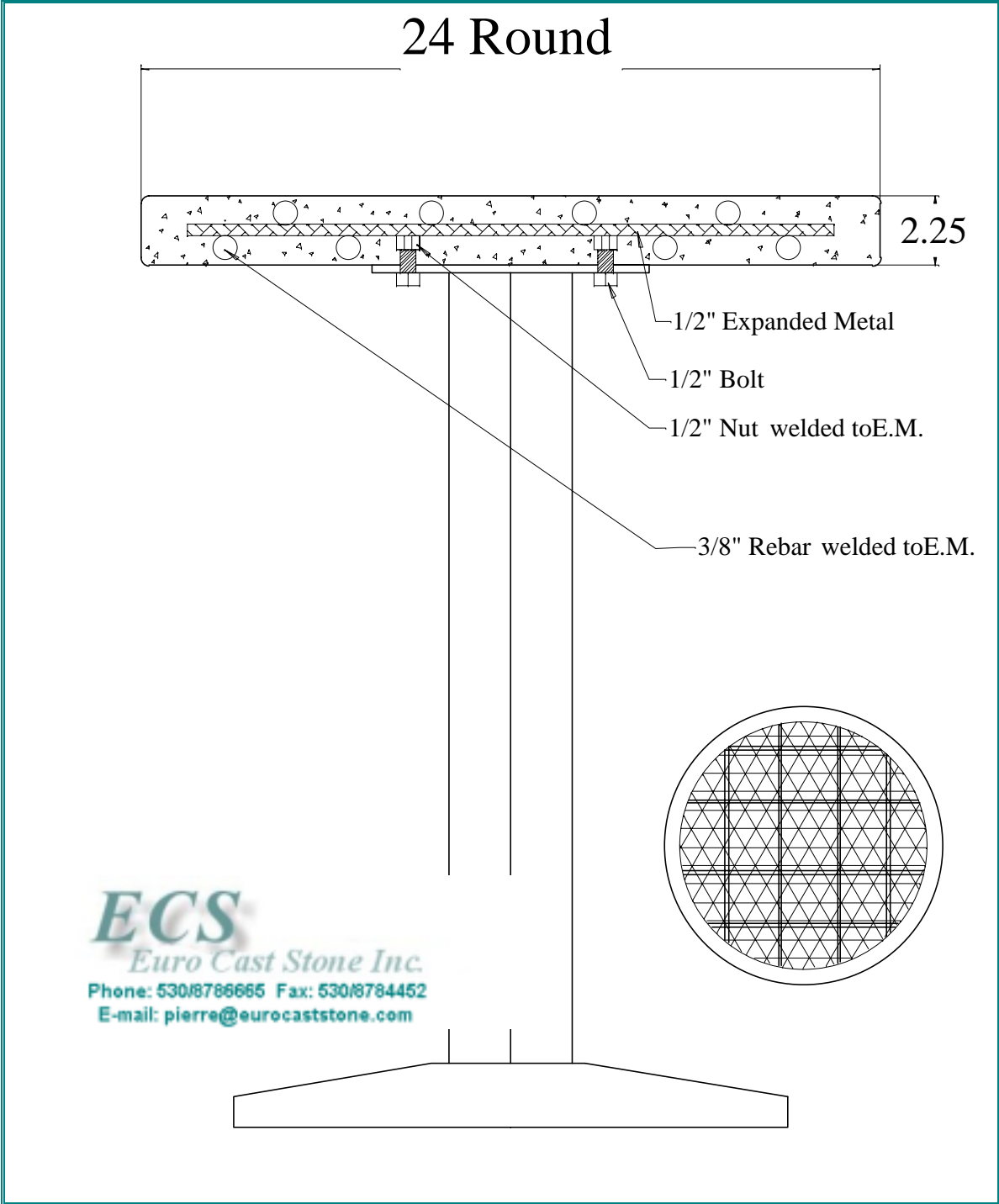
Concrete Baseboard and the detail of the wainscoting



Reproduction of the antique Provencal Sink



## ECS COUNTERTOPS EDGES



## TABLE TOP SPECIFICATIONS







COUNTER TOP & GRAPEVINE BORDER















**Shower wall trimmed with the Lattice Border**



**Textured slabs on a vanity**

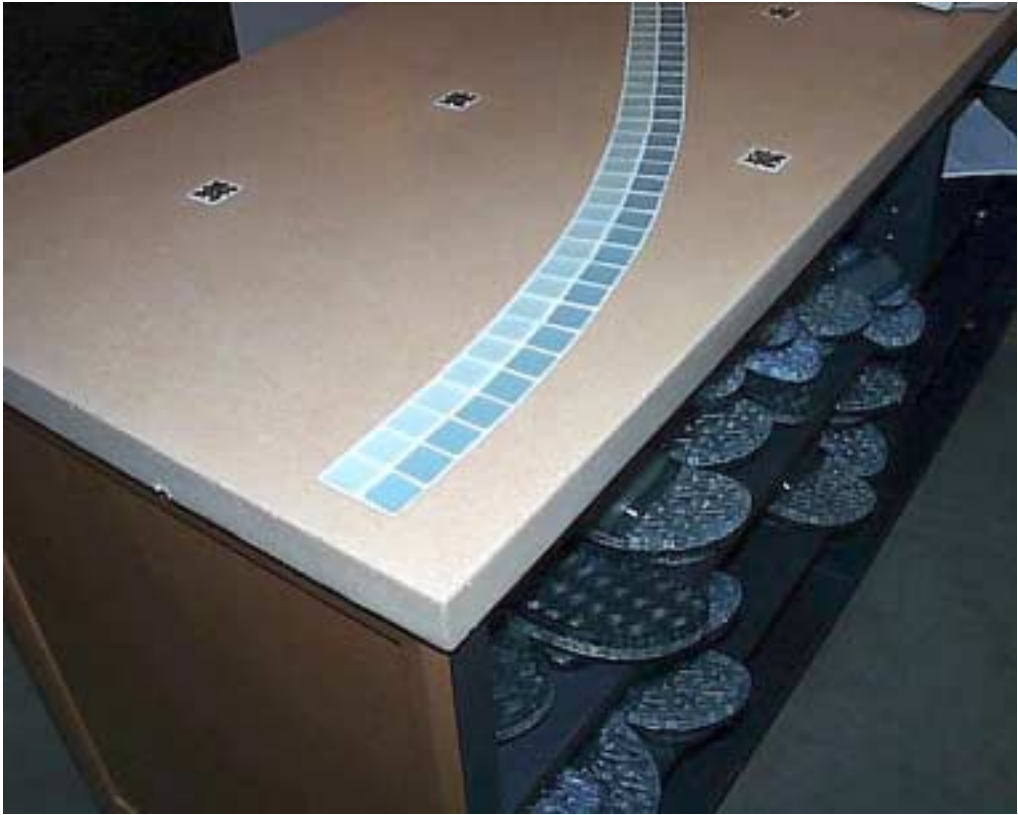


**Grapes, quarter round & corbels , Create your own hood system**



Rattan Edges





Glass tiles inlay in concrete countertops

